

Microsoft Exchange Email and Collaboration

UPGRADE YOUR WEBMAIL ACCOUNTS TO MICROSOFT EXCHANGE

Microsoft Exchange is the top business email collaboration application available, purchasing this service also includes free upgrades to Microsoft Outlook 2007 so that you have the latest software to take advantage of the greatest features available.

Features	Included
Exchange Access Protocols	✓
2 GB Mailboxes / 50 MB Attachments	✓
Premium Spam Filtering	✓
Premium Virus Protection	✓
Free Outlook 07 & Entourage 08	✓
OWA (Outlook Web Access)	✓
Collaboration & Productivity	✓
Control Panel	✓
Mobile Access	✓

Full-featured
**Microsoft
Exchange**
with **NO MAINTENANCE**



Complete Exchange Email & Collaboration Features

- Managed Exchange solution offers collaboration for all Exchange users within the same domain
- Schedule meetings and share calendars
- Create contacts in the Global Folder that can be shared and create distributions groups
- Manage and modify Public Folders for organizing content
- All mailboxes have full MAPI capability (not just a scaled down version delivering only POP3 or IMAP access)
- Full integration with Outlook 2007 and Entourage 2008 clients for the best end-user experience (we provide either client with each mailbox)
- Access through (Outlook Web Access) OWA from any internet enabled PC (Internet Explorer is the preferred browser)

Collaboration and Productivity

- **Personal and Shared Calendars** - Allow users to maintain their own personal calendar and share its contents with other users.
- **Personal and Shared Contacts** - Allow users to maintain their own personal contacts and share contacts with other users.
- **Personal and Shared Tasks** - Allow users to manage their own personal task lists and share them with other users.
- **Global Address List (GAL)** - Ability to create and manage a corporate address list that stores all the contacts within the organization and can be viewed by anyone in the organization.
- **Distribution Lists** - Ability to create an email address that will email a list of email addresses all at the same time.
- **Scheduling Assistant** - Helps users efficiently schedule meetings by providing visual guidance on the best and worst times to schedule meetings based on meeting invitees and required resources.
- **Out of Office Messaging** - Users can schedule out of office messaging to begin and end on specific dates and times.
- **Public Folders** - Create a folder that can share files, emails, contacts, calendar items, notes, and/or tasks with other users.

Our Backup Strategy & Unrivalled Data Recovery Times

- Daily disaster recovery backups for all mailboxes and public folders
- Rapidly recover lost data in case of accidental deletion or system failure

Premium Anti-Virus and Anti-Spam Comes Standard

- Premium spam filtering and anti-virus solution included
- Eliminating 99% of unwanted email before it ever reaches your inbox
- Inbound and outbound email security checks (utilizes proprietary detection systems, 4 virus scanning engines, more than 60 filtering techniques)
- Easy-to-use tool for managing rules and policies, as well as, any quarantined items

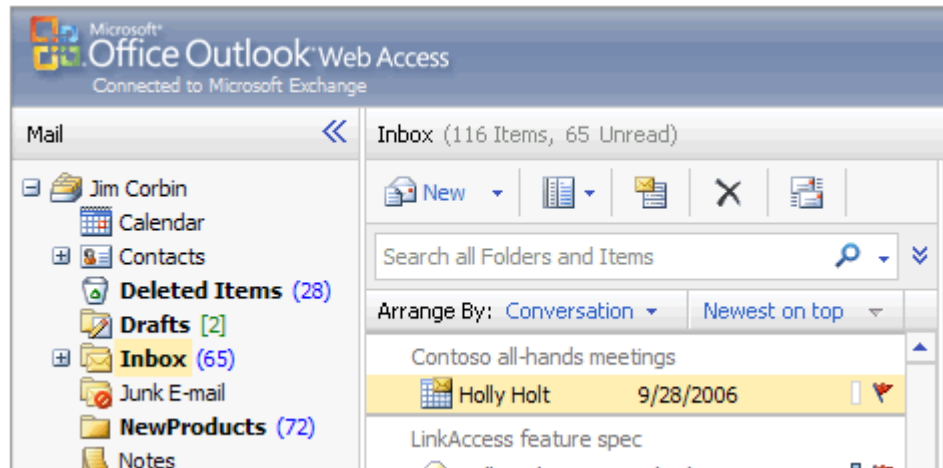
Allocated Storage Space

- Each mailbox is initially provisioned and configured with 2 GB of allocated storage space and 1 GB in public folder
- All storage space can be shifted around to any mailbox or Public Folder within the domain
- Add storage in 1 GB increments
- We don't place limits on mailbox sizes, but we strongly recommend that each mailbox does not exceed 5 GB

Anywhere Access

- BlackBerry from Research in Motion (RIM)
- iPhone from Apple (using IMAP)
- Good Mobile Messaging
- ActiveSync for Windows Mobile 5.0 devices (including Direct Push technology)
- Access through Outlook Mobile Access (OMA) from any browser-enabled wireless internet device

Web-based Management Portal and Email Access



- Administer your Managed Exchange configuration, domains and users in real-time without any in-depth technical knowledge
- Perform tasks such as email routing, setting aliases, creating groups, adding users, allocating storage, forwarding, resetting passwords and configuring email clients using the Outlook Configuration Wizard

Demo of Microsoft Outlook 2007 (FREE with each Exchange email account):

<http://office.microsoft.com/assistance/asstvid.aspx?assetid=XT100627631033&vwidth=700&vheight=530&type=flash&CTT=11&Origin=HA101672681033>

Demo of the Outlook Web interface, which is a fully functional version of Outlook from anywhere on the internet - OWA (Outlook Web Access):

<http://www.microsoft.com/exchange/code/OWA/index.html>

Features, Functions, Comparisons about Microsoft Exchange

<http://www.microsoft.com/exchange/evaluation/compare/default.aspx>

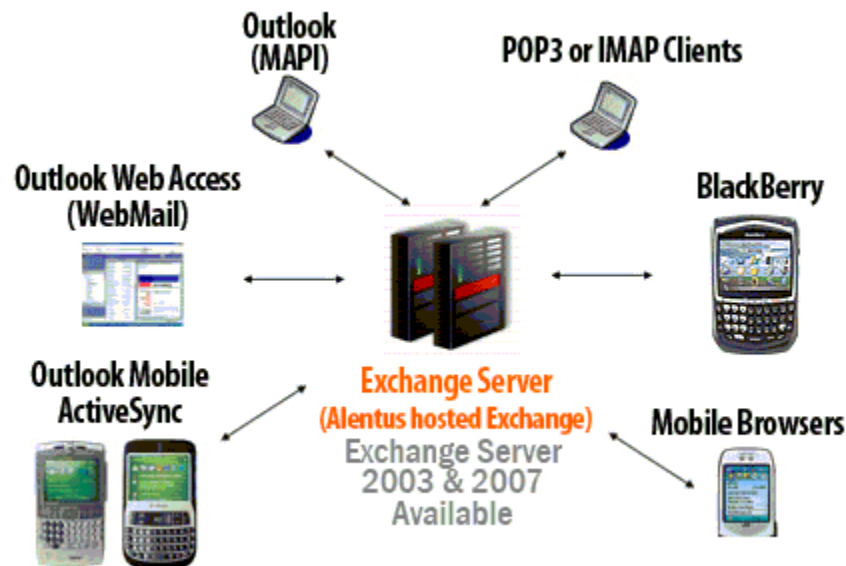
Benefits of Microsoft Exchange

Gain the Benefits of Microsoft Exchange

Exchange Server, the Microsoft messaging and collaboration server, is the No. 1 corporate messaging software. Exchange Server has quickly gained popularity among organizations of all sizes and includes a number of features not available in our free, regular POP3 email accounts.

Access - Anywhere, Anytime, from Any Device

With all mailbox data, including contacts, calendar and more, stored centrally on the Exchange Server, Exchange Account users can connect via a variety of devices to view their entire mailbox and seamlessly synchronize across platforms and devices. For example, your staff can use Microsoft Outlook 2007 while in the office, a BlackBerry or Treo handheld while on the road, and Outlook Web Access from home or an Internet cafe - all without ever having to worry about synchronization of any e-mails, contacts, or appointments. Everything is kept in sync! No other email system can offer you this type of powerful coordination of your information.



Collaboration and Information Sharing

The Exchange Server collaboration features help you to share information quickly and efficiently. Typical collaborative scenarios include maintaining shared address lists that everyone can view and edit, scheduling meetings that include people and conference rooms by viewing associated free or busy schedules, the ability to grant other people, such as administrators, access to your mailbox on your behalf. You can also manage "rules" for processing messages on Exchange Server, giving you the flexibility to create auto-responses and automatic filing of incoming messages.

Benefits of Outsourcing Exchange

As it has steadily gained in popularity, Microsoft has continuously added more features and functionality to deliver more value. As this has increased the complexity of the software, administrators find they have to spend more and more time maintaining internal systems, especially when installing upgrades and troubleshooting new features. This trend has resulted in more and more organizations looking to outsource their Exchange Server to companies that have the expertise and focus on maintaining Exchange Servers.

However, designing and building an Exchange Hosting platform is expensive and complicated. The Microsoft recommended solution for offering Exchange Hosting can easily cost more than \$200,000 to build and maintain per year. And without a trained staff of Microsoft certified experts, Exchange Server can be unstable in large environments. Would you really want to take this risk with something as mission critical as e-mail?

Collaboration Features of Microsoft Exchange Mailboxes

Exchange Server is an e-mail-based collaborative communications server designed to inter operate with Microsoft Outlook, Microsoft Outlook Web Access (OWA Webmail) and various mobile devices such as BlackBerry, Treo and Windows Mobile handhelds. Unlike regular POP3 email Exchange Server accounts include integrated collaborative messaging features that extend e-mail to include scheduling, contact management, folder sharing, and task management functionality.

Business-Class Messaging

Coupled with Microsoft Outlook, Hosted Exchange provides valuable messaging features that go beyond simple e-mail that allow business users to take control of their inbox. This functionality includes:

- Contact management, event and calendar management, resource scheduling and administration, task management and shared folders
- Delegate access to allow others to check designated components like e-mail, tasks lists and calendars
- Server and client-side rules and spam filtering to manage the flow of incoming messages
- Multi-colored flagging to mark messages for follow-up, prioritization, searching and categorization
- Recovery of sent messages
- Ability to delete and replace an unread message
- Out-of-office automatic reply

Enhanced Security

Exchange was designed for optimal security and privacy, with a variety of features at both the server and mailbox level. Both Exchange Server 2003 and Exchange Server 2007 use Kerberos authentication, a network security protocol that provides mutual authentication for a network connection.

Additional security protocol support includes Secure/Multipurpose Internet Mail Extensions (S/MIME), enabling users to digitally sign and encrypt e-mails and attachments or to access their mailboxes securely, without a VPN connection, when working outside company firewalls. Anti-spam features include support of real-time Safe and Block lists and both server-side and client-side message filtering in Outlook to help reduce the amount of unsolicited junk e-mail messages.

Public Folders

Public folders are a shared resource, available offline and online, for instantaneous storage of digital content and communications. Any user with access privileges can retrieve and contribute information from a public folder while working in Outlook. Rather than e-mailing file attachments back and forth, they can be stored in a common location for sharing and discussion.

Shared Calendars

Exchange Server includes rich features for personal, group, and resource scheduling that integrates with e-mail, contacts, and tasks. Users can share their calendar information with others and view multiple calendars simultaneously to send meeting requests for shared open times. Recipients can decline or propose a different time, or accept and have the meeting automatically entered in their calendars. Schedules for shared resources like conference rooms and projectors may also be incorporated.

Shared Contacts

Contacts in the company directory (Global Address List or GAL) are centrally maintained for sharing throughout the organization and can be downloaded to Outlook and synchronized for access from Outlook Web Access (OWA) and Outlook Mobile Access (OMA). Distribution lists also can be centrally shared and maintained to facilitate communication to groups such as departments or customer lists.

Shared Task Management

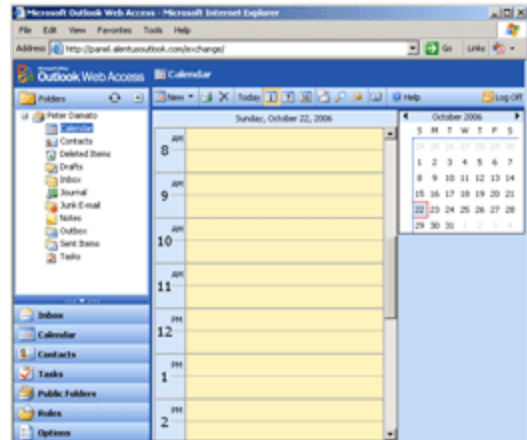
A task list provides the ability to create and assign tasks and can be integrated with e-mail notification and scheduling for basic project management and personal time management. Users can track progress as a task moves from active to complete to overdue, while managing status through various criteria like the person responsible and the category.

Anytime, Anywhere Access

In addition to Outlook, Exchange Server enables a large number of clients for mailbox connectivity, including web browsers through OWA (Outlook Web Access) and Windows-mobile devices through OMA (Outlook Mobile Access), providing flexibility and productivity for information workers regardless of location.

Features of Microsoft Outlook – Your Desktop Application

Our Hosted Exchange Services, together with Microsoft Office Outlook, deliver breakthrough advances in worker productivity and network performance. Exchange Server and Microsoft Office Outlook are designed to work together to provide the richest feature set and the best performance, enabling knowledge workers to be productive whenever and wherever they choose to work. Mobile and remote workers can communicate and collaborate on the go, and coupled with the new user interface (UI) and security and support features, can communicate and collaborate more productively.



Start using Outlook Web Access - the Web's most powerful WebMail client. Works just like Outlook and keeps everything in sync.

Free Copy of Outlook 2007

Each ExchangeMail account includes a free, licensed copy of Microsoft Outlook 2007. Once you setup your ExchangeMail account, you will be emailed instructions on how to download your full production copy of Outlook 2007, along with your license key information.

Outlook Web Access (OWA)

Outlook Web Access is an integrated component of Exchange Server and fully supported with all Exchange Hosting Accounts. By using only a Web browser and an Internet or intranet connection, Outlook Web Access enables you to read your corporate e-mail messages, schedules, and other information that is stored on the Exchange Server. Everything between your desktop Outlook and Outlook Web Access is kept synchronized - messages, contacts, calendars, tasks and public folders. [Read more](#) about the powerful features of Outlook Web Access - the most powerful WebMail client available on the Internet today (Microsoft Video - <http://www.microsoft.com/exchange/code/OWA/index.html>)

Increase Your Staff's Productivity

You can get your work done more quickly because Exchange Server and Outlook work together to deliver a full feature set that gives you consistently efficient access to personal business information independent of network characteristics. Mobile users find it easier than ever to stay up-to-date with the information flowing into their office mailboxes from a variety of mobile devices.

Improvements in the way Exchange Server and Outlook work together dramatically increase the performance of Outlook over low or fluctuating bandwidth conditions. Checking your e-mail messages over a dial-up connection or low-bandwidth carrier network, such as General Packet Radio Service (GPRS) or 1xRTT, feels much more like working in the office. By using the new Outlook 2007 UI, you can more easily and speedily optimize your e-mail.

Collaborate and Communicate More Efficiently

A powerful communication and scheduling program, Outlook 2007 offers new and enhanced functionality that improves your efficiency and makes it easier to collaborate with colleagues. This new functionality includes a completely redesigned UI so you can read your mail and manage your messages easier, a new local copy of the Outlook mailbox, and HTTP access from Outlook. HTTP access enables more secure access to Exchange Server on the Internet without the need for a virtual private network (VPN).

The new local copy of the mailbox offers users much faster access to their data and fantastic new opportunities in usability. Significant improvements in MAPI compression allow data to travel faster between Outlook clients and Exchange Server, reducing the number of round-trip communication attempts and bytes over the wire. Like the rest of the Microsoft Office System, Outlook 2007 helps you work smarter.

Outlook 2007 also includes new antispam features, and users can now upload their Safe and Blocked Sender Lists to Exchange Server, where server-level filtering can be executed.